

Jeep (Push to Start)

Wrangler	18	19	20	21	22	23	24
Wrangler 4xe Hybrid				21	22	23	
Gladiator			20	21	22	23	

-This remote start will monitor the vehicle lock circuit and use the pulses generated by pressing Lock>Unlock>Lock on your OEM remote to start the vehicle.

-This is a pre-wired plug and play kit. No wire connections are required into the vehicle for basic installation. The kit also includes an optional parking light flash feature. If used, that feature requires one wire connection.

-We have already loaded the correct firmware into the remote start module. You will need to pair the module to your vehicle when the wiring is complete. Instructions are on page 4.

Overview

There are 6 basic steps to this remote start installation. We're going to address each of these:

1. Download and install Flash Link Manager software.
2. Make the connections.
3. Pair the remote start to the vehicle.
4. Complete the Dcryptor programming
5. Test the system.
6. Button it up!

Step 1: Download and install Flash Link Manager software

**The Flash Link Manager (FLM) software only works on a Windows computer. Enter the following link into your web browser, then download and install the software <https://fortin.ca/en/support/flashlinkmanager.html>

Next, open the software and log in with the following credentials:

email: flash@kleinn.com password: Flash2020

Once the (FLM) software installed and open, then connect the Flash Link Updater (FLU) to the USB port of your Windows computer. The (FLM) software will detect (FLU) and display a message that the module is not connected, this is normal. Next, select "Pro Mode" when prompted, if not prompted, click the gear in the upper right hand corner and select Pro Mode. Do not plug the remote starter into the (FLU) tool until you have completed the wiring and vehicle programming procedure at step 3. Leave the computer and software in this state ready to plug the module in when the time comes, and proceed with the wiring connections.

Preparation:

Remove the plastic shroud below the steering wheel in the vehicle. This will allow access to the under dash driver's side location of the vehicle. The remote start brain will be mounted in this location. Before you start wiring, look for a place under the dash where there's some open space that will fit the module. Pay attention to moving parts like the pedals, e-brake and steering column. Be sure to route your wiring away from those areas. Be careful not to break the panels –especially in cold weather.

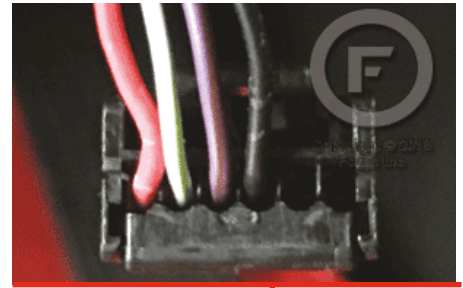
Next, open the glove box on the passenger's side and release the tabs on both sides to open the glove box past it's normal stopping point. The glove box can then be lifted off its hinges and removed. This will allow access to the CAN Junction connectors.

Step 2: Wiring

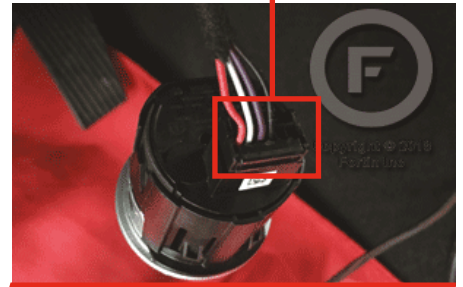
Where to make connections:

When you open up your remote start, you're going to see a bunch of loose wires in a bundle. Don't be intimidated! The system wiring overview and steps below will show you the specific wires that you're going to need and where they connect in your vehicle. Any wires that are not shown to connect in this guide will not need to be connected.

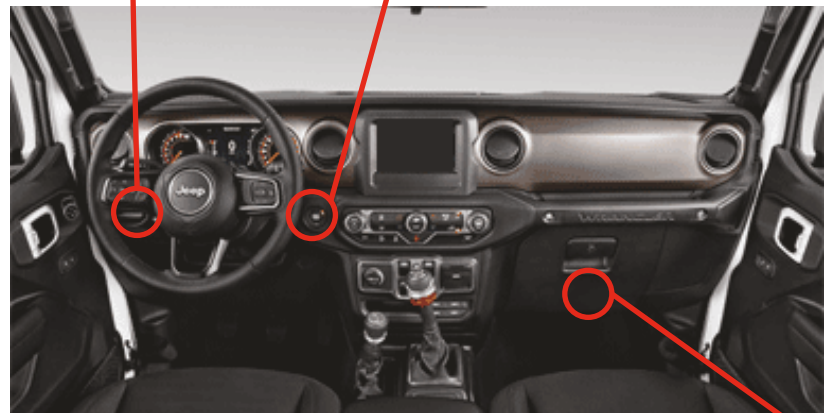
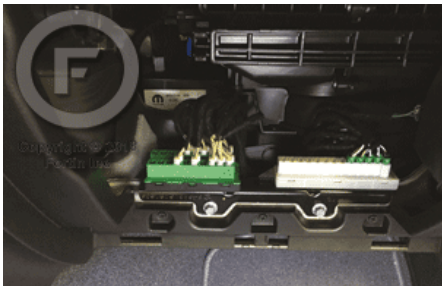
① At Push-to-Start button.



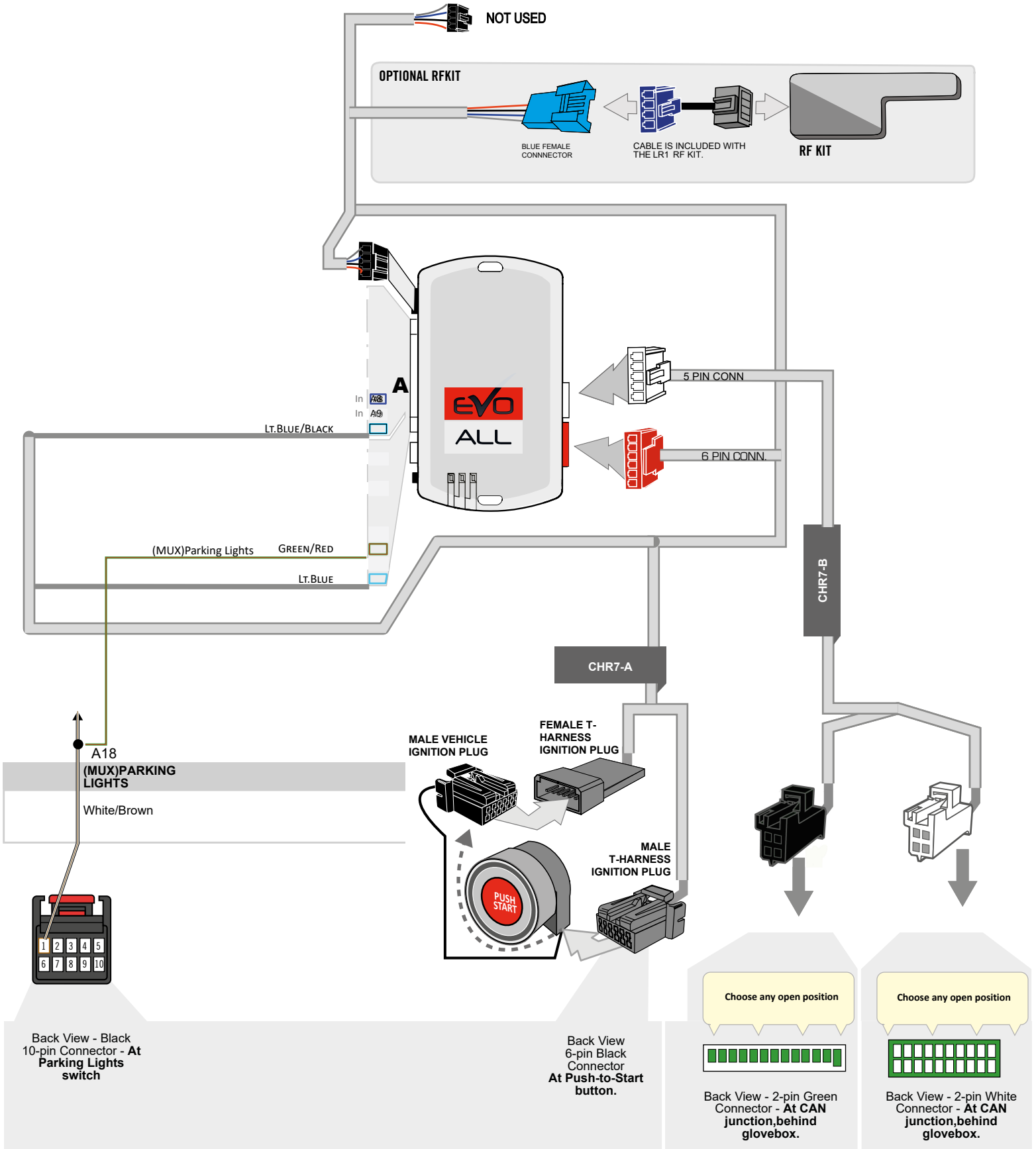
③ At parking light switch.



② At CAN junction, behind the glovebox.



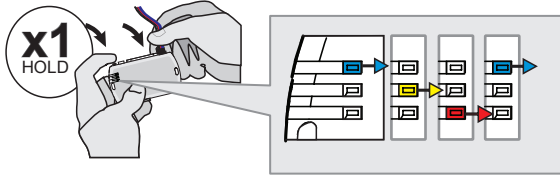
System Wiring Diagram



STEP 3: Programming

Once the T-harness has been connected, the remote start module is ready to be programmed.

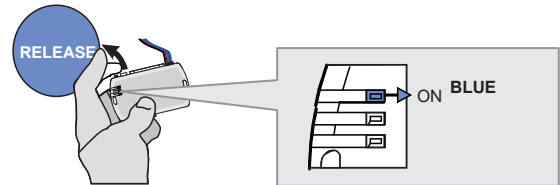
1



Press and hold the programming button:
Insert the 4-Pin (Data-Link) connector.

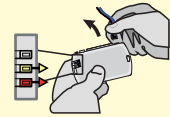
↳ The Blue, Red, Yellow and Blue & Red LEDs will alternatively illuminate.

2

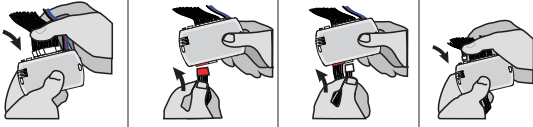


Release the programming button when the LED is BLUE.

If the LED is not solid BLUE disconnect the 4-Pin connector (Data-Link) and go back to step 1.

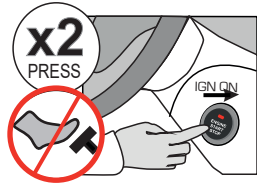


3



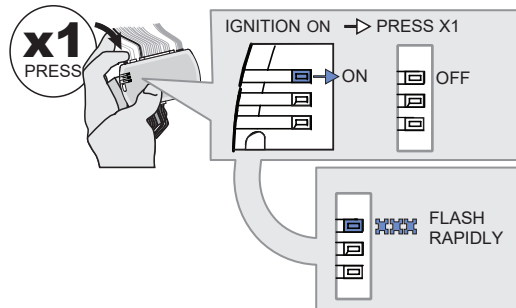
Insert the required remaining connectors.

4



Do not press the brake pedal.
Press the START/STOP button twice to turn ON the ignition.

5

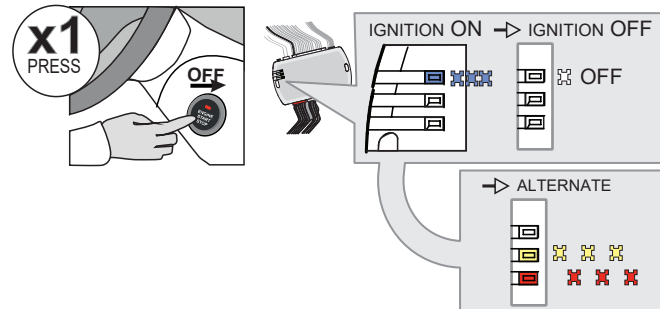


Press and release the programming button once (1x).

↳ The BLUE LED will turn off.

↳ The BLUE LED will flash rapidly.

6



Press the START/STOP button once to turn OFF the ignition.

↳ The BLUE LED will turn off.

↳ The RED and YELLOW LEDs will alternate.

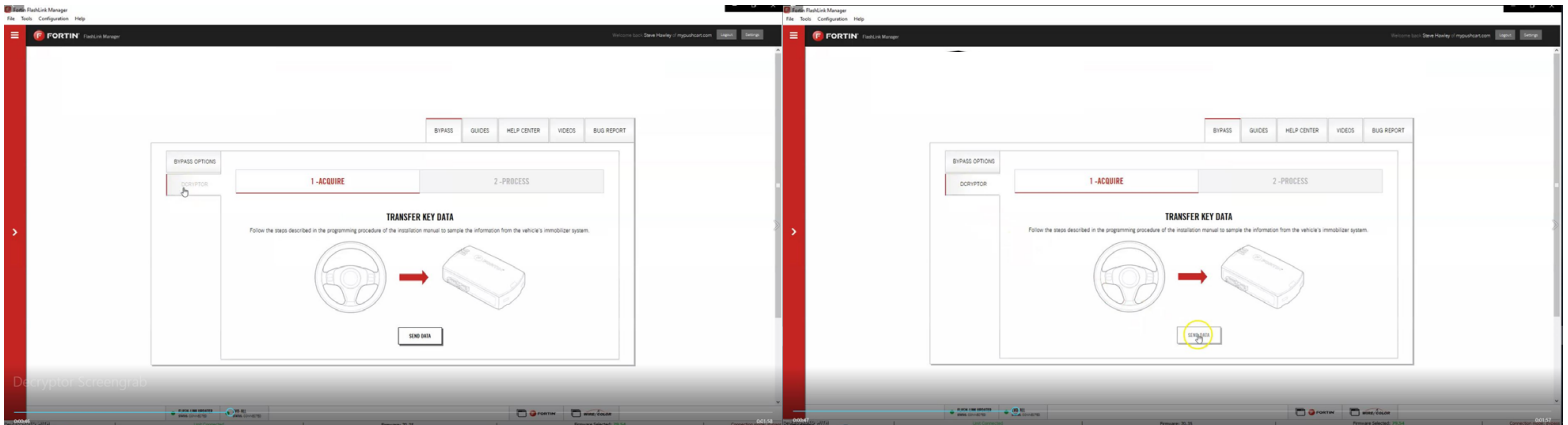
Once you have the alternating red and yellow LED's, unplug all the connectors from the remote start brain. Be sure to disconnect the 4-pin black data link plug last.

Step 4: Dcryptor

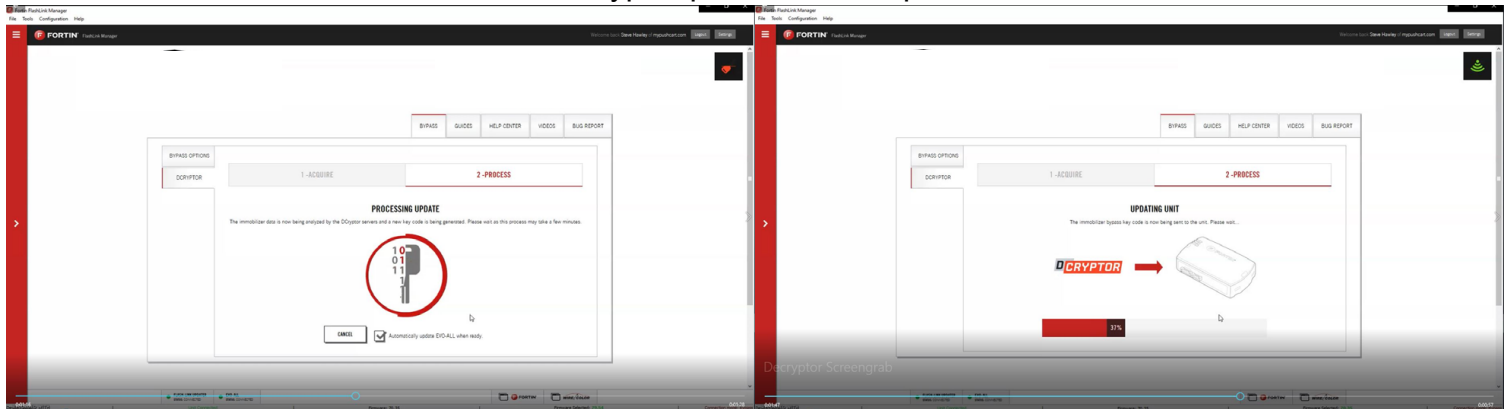
Next, it's time to bring the remote starter module to your computer and plug it into the supplied four-pin plug from the Flashlink Updater (FLU). For a video on how to do these steps visit: www.kleinn.com/flashlink



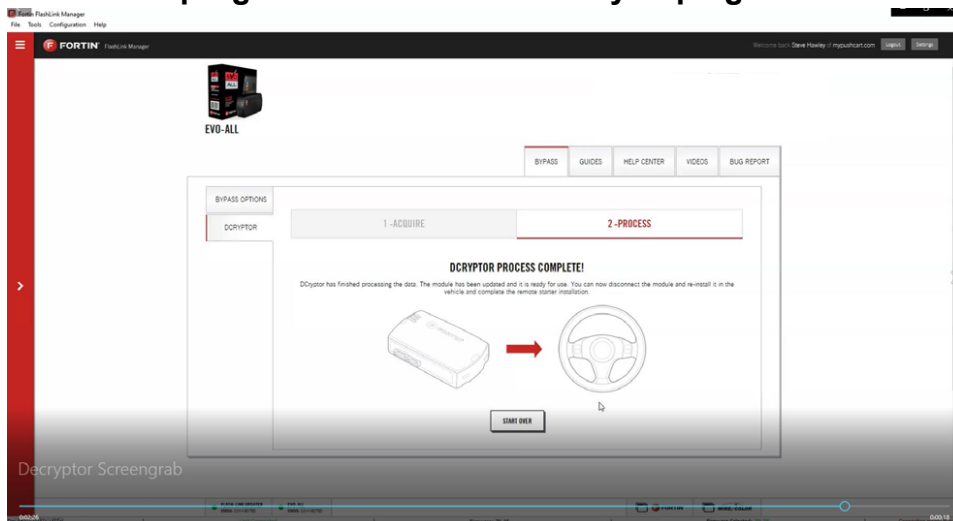
- The software will detect you plugging it in and will automatically load the current settings.
- Next, click the Dcryptor tab. Then click on the Send data button.



Wait while the updater reads data from the remote starter. Once it is done it will update the remote starter and you will need to wait again. You will see a status bar at the bottom of the screen. When it gets to 100%, the Dcryptor process is complete.



You can now unplug the remote starter module and plug it back into the connectors in your vehicle. Make sure to plug in the power connector first and then the rest of the plugs afterward. **Do not hold the program button down when you plug the connectors back in.**

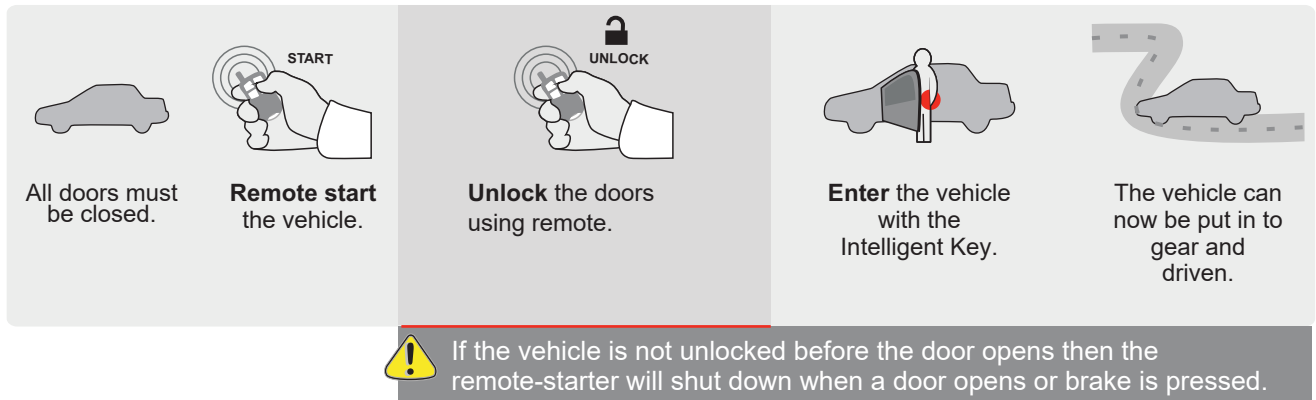


Step 5: Test the System

1. Press Lock>Unlock>Lock on your OEM fob three times in succession. The vehicles ignition/accessory circuits will turn on after a few seconds. Another few seconds later the starter motor will engage. It's all about getting the timing down. Lock-1000-Unlock-1000-Lock. You will see the Blue light on the remote start module every time you press the button.
2. Step on the brake pedal to stop the engine.

Step 6: Close it Up

Now gather up all of your wiring and neatly bundle it together using zip ties or electrical tape. Find a secure place to put the remote start module and use zip ties to secure it. **Make sure that the remote start wires are not near any moving parts on the steering wheel, pedals or emergency brake! Re-Install any panels that were removed to gain access to key switch in reverse order they were removed. ENJOY!**



If you have any installation questions or problems, call for tech support

520.579.1531

Copyright 2024 Kleinn Automotive Accessories